

FORD RANGER FULL TAILGATE COVER SUGGESTED INSTALLATION INSTRUCTIONS

The full tailgate cover is designed to fit over the complete tailgate with no seams exposed on the rear face of the tailgate. It covers the original handle area so another latch mechanism which operates from the inside of the tailgate may be used.

A Tailgate handle relocator kit is available. If this method is to be used, it must be done now before installing the tailgate cover.

1. Tailgate should be removed from the truck.
2. Be sure the latch mechanism is modified and working correctly. After the cover is installed the original mechanism is not accessible.
3. Straighten the tailgate if it is bent or twisted. If installing a louvre cover, paint the rear face of the tailgate with a flat black paint to prevent the original paint from showing through the louvres. Any distortion in the top of the tailgate should be repaired to allow the cover to follow the original tailgate contour.
4. Place the cover over the top of the tailgate first then push the bottom over the bottom of the tailgate.
5. Push downward on the cover to make sure that it fits properly-especially along the top of the tailgate. There will be a gap at the sides which will be closed by clamping before welding.
6. Clamp both sides of the tailgate cover to the tailgate using at least four clamps on each side and a pad under the clamps to protect the tailgate cover. Start at the top on each side and work downward with the clamps. Clamp carefully to eliminate gaps between the cover and the curved upper portion of the tailgate. Be sure the cover is tight against the tailgate along the bottom edge.
7. The cover is now ready to be welded permanently to the tailgate. Tack weld the edges under the clamps in a few places at each end before fully welding the cover in place. It isn't necessary to weld a continuous bead for the entire seam, but only as required to hold the cover to the original tailgate contour.
8. Clamp the cover tightly against the lower edge of the tailgate and tack weld a few places to keep it tight.
9. Finish grind any rough welds and the ends of the tailgate. Use caulking to seal the welded seams between the tailgate and cover. Prepare the tailgate for painting.

©Copyright 1997 MAR-K Specialized Mfg. All rights reserved.

Another Outstanding Part Manufactured in Oklahoma City, USA by

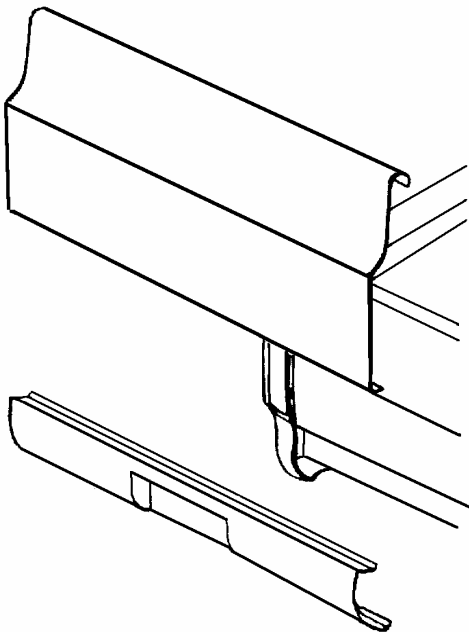
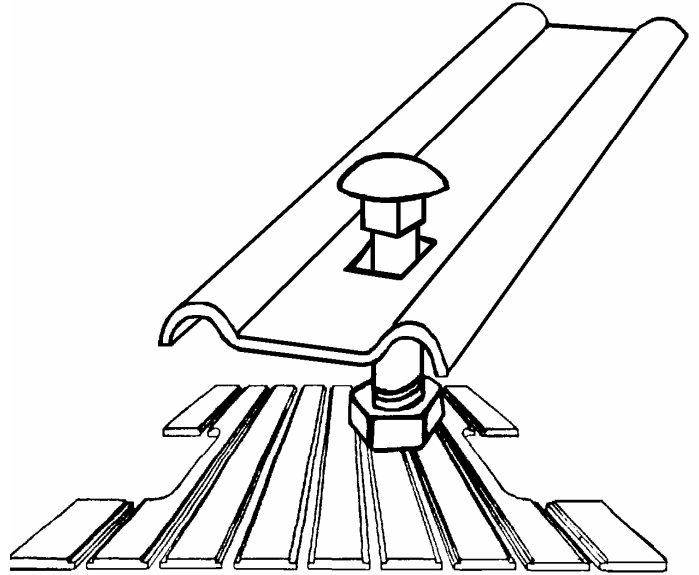


RESTORATION & CUSTOM PICKUP PARTS

BED STRIPS

BED WOOD

- Bed Sides
- Tailgates
- Cross Sills
- Rear Sills
- Hardware
- Front Bed Panels



REAR PANS FRONT PANS TAILGATE COVERS HANDLE KITS

- Weld on or bolt on panels
- Complete instructions included
- 18 Gage steel
- Smooth or Louvres

**** PARTS AVAILABLE VARY EACH STYLE – CALL FOR MORE INFO****